



[www.tapflo.com](http://www.tapflo.com)

# CT quality grade centrifugal pumps



Edition 1/2005

tapflo®

# tapflo®



## Tapflo - your reliable pumpchoice

With experience from industrial fluid handling and pump manufacture since 1970, we know what you as a customer require from an industrial pump. Ever since we started our manufacture of air operated diaphragm pumps, we have always had our winning concept in mind: to create compact diaphragm pumps for reliable duty and with a minimal number of components enabling easy maintenance. We are always keenly aware of new requirements and ideas from our customers. The products are therefore always in continuous progress with improved detail solutions, new materials and further accessories.

## Tapflo quality

The Tapflo manufacture process is now certified according to ISO 9001:2001. All pumps are also CE-marked and fulfill the demands of the EC machinery directives. We have also some Tapflo models certified according to the EC ATEX directive, for products used in explosion hazardous environments.



## The history of Tapflo

Tapflo was founded in Kungälv (north of Gothenburg), Sweden 1985 and has since then been working with design and manufacture of air operated diaphragm pumps. The product range has grown from a few plastic models, to complete PE & PTFE, metal and sanitary series. Within the Tapflo group today 100 employees are working in design, production, and sales.

# ▼ The compact centrifugal pump

## The CT range

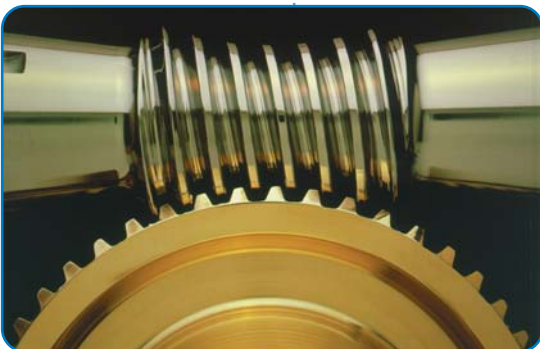
CTAA-03	19 m <sup>3</sup> /h, 11 m
CTBB-07	26 m <sup>3</sup> /h, 13 m
CTCC-15	23 m <sup>3</sup> /h, 24 m
CTCC-22	39 m <sup>3</sup> /h, 24 m
CTCE-22	42 m <sup>3</sup> /h, 27 m
CTDD-40	23 m <sup>3</sup> /h, 41 m
CTDF-40	50 m <sup>3</sup> /h, 26 m
CTDF-55	50 m <sup>3</sup> /h, 41 m
CTDG-55	30 m <sup>3</sup> /h, 51 m



CT is an open impeller centrifugal pump, manufactured from stainless steel AISI 316L. With excellent electro polished surfaces, high finish and mechanical strength, the CT range meet the demands from a variety of today's industries. After all, CT is still available at a very appealing price level.

## ►►► For a variety of industries

The CT range has a very wide range of applications – from transfer of water, to pumping of chemicals. Below are a few common industrial fields and applications for the CT range.



### **Food-, beverage- and pharmaceutical industries**

A variety of auxiliary applications, like transfer of water, edible oil, alcohols, detergents, and CIP cleaning liquids

### **Chemical industry**

Transfer of a variety of mild chemicals and solvents

### **Mechanic industries**

Handling of water and coolants etc

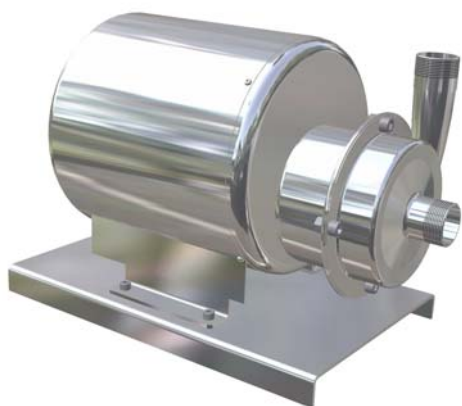
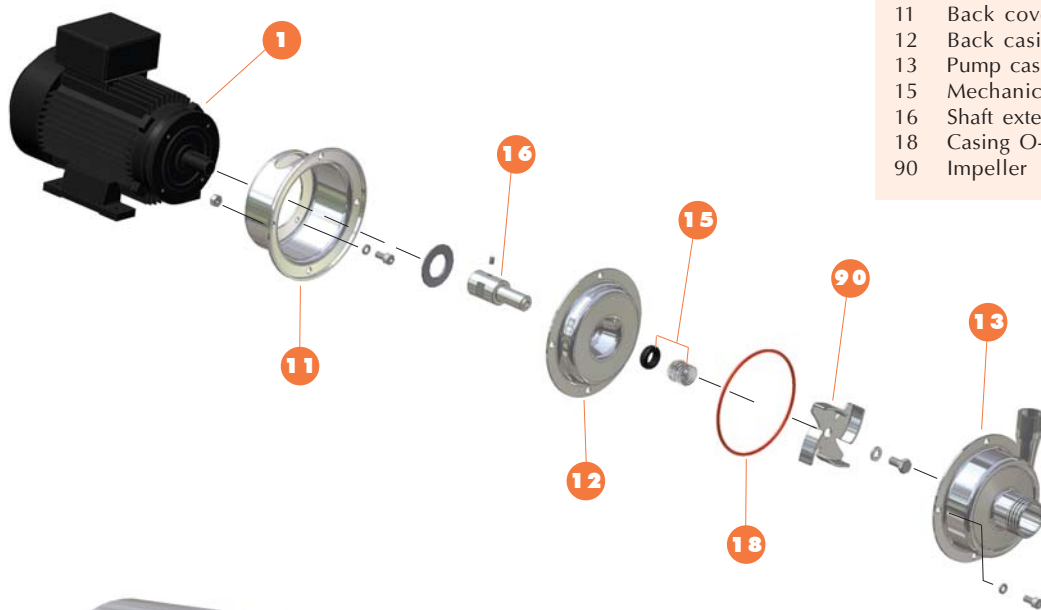
# ▼ Features & benefits ▼

## ▶▶▶ Quick and easy maintenance

CT is normally maintenance free. When necessary, the CT pump is very simple to maintain thanks to the small number of components – only 19 different parts. Most of these components will last “a lifetime”. The good effect is short down time and low maintenance costs.

### Key components

- 1 Electric motor
- 11 Back cover
- 12 Back casing
- 13 Pump casing
- 15 Mechanical seal
- 16 Shaft extension
- 18 Casing O-ring
- 90 Impeller



### ◀ Options for hygienic installations

The optional motor shroud and baseplate in stainless steel AISI 304L makes it easier keeping the unit clean and provides splash protection for the motor.



### Interchangeability mechanical seal

Many different seal faces are available, to suit different liquid types. The internal mounting provides superior cooling from the liquid.



### Solids with open impeller

The open type impeller is insensitive for solids. Maximum size of solids is 6 mm, or even bigger if soft. The one-piece high finish design provides silent pumping.

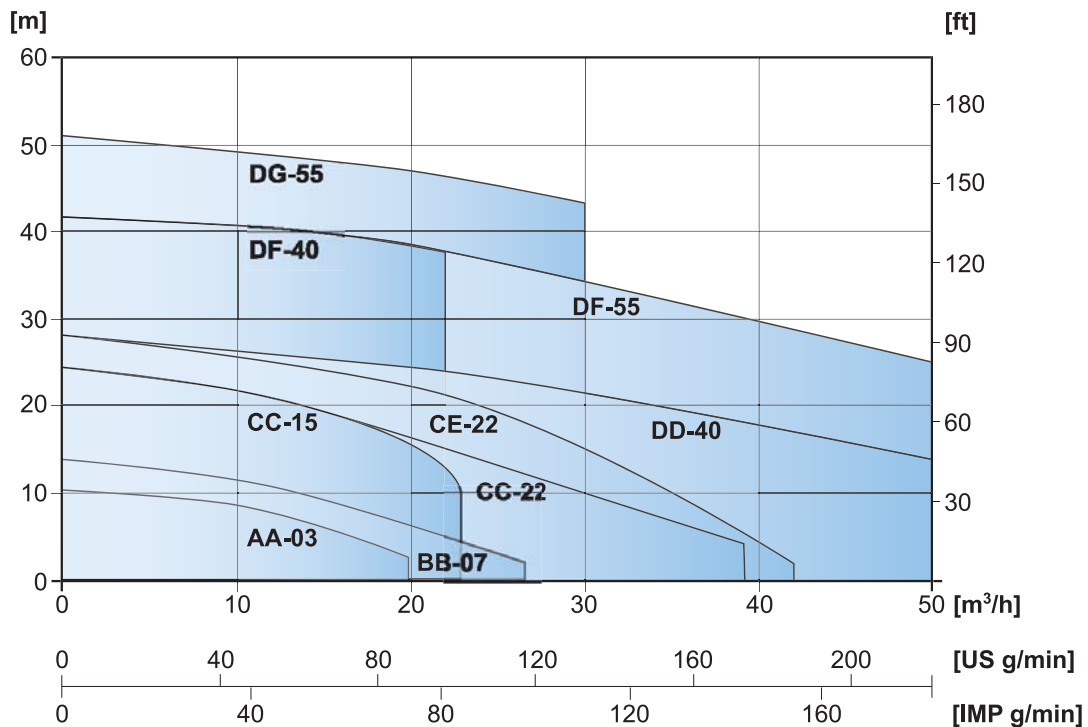


### Flexible choice of drive

The smart design of this shaft extension allows fitting any IEC standard type motor to the pump. I.e. you are able to choose required voltage, protection class, explosion protection etc.

## ▶▶▶ Performance curves

The performance curves are based on water at 20°C. Speed 2900 rpm.  
Contact us for detailed curves.



## Technical data and limits

### Limits

Temperature: max 90°C  
Viscosity: max ~200 cSt  
Particles: max diameter 6 mm (bigger if soft)

### Housing and shaft material

AISI 316L electro polished stainless steel

### Mechanical seal

Standard: ceramic/graphite/EPDM  
Options: ceramic/graphite/FKM  
SiC/SiC/FKM

### Casing o-ring

Standard: silicon  
Options: EPDM or FKM

### Motor

Standard: IP55, 3-phase 220/380 V, 50 Hz, 2900 rpm, IEC frame B3/B14  
Options: 1-phase or Ex-proof motor

### Connections

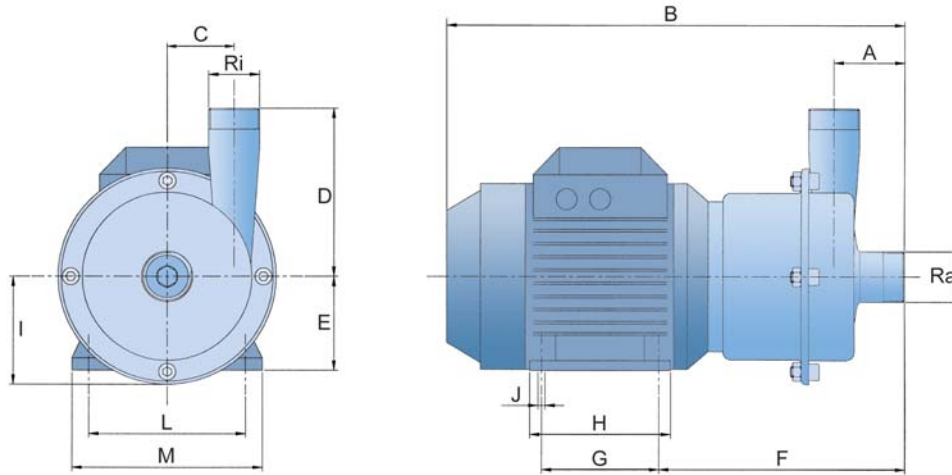
Standard: BSP threads  
Options: DIN 11851 or SMS threads

### Options

Trolley in stainless steel  
Motor shroud in stainless steel  
Baseplate in stainless steel

## ►►► Dimensions

Dimensions in mm, where other is not indicated



### General dimensions

Model	Motor power (kW)	IEC motor size	Connections Ra	Ri	A	B	C	D	E	F	G	H	I	øJ	L	M
CTAA-03	0.37	71	1"	¾"	60	359	36	100	71	197	90	112	73	7	112	135
CTBB-07	0.75	80	1½"	1"	63	393	50	110	80	208	100	125	86	9	125	153
CTCC-15	1.5	90	1½"	1½"	64	444	66	160	90	228	125	150	103	10	140	170
CTCC-22	2.2	90	1½"	1½"	64	444	66	160	90	228	125	150	103	10	140	170
CTCE-22	2.2	90	1½"	1½"	64	444	66	160	90	228	125	150	103	10	140	170
CTDD-40	4	112	2"	2"	70	493	92	192	100	255	140	172	128	12	160	197
CTDF-40	4	112	2"	2"	70	493	92	192	100	255	140	172	128	12	160	197
CTDF-55	5.5	112	2"	2"	70	521	92	192	112	262	140	168	128	12	190	222
CTDG-55	5.5	112	2"	2"	70	521	92	192	112	262	140	168	128	12	190	222

### Optional connections

Model	Optional connections			
	SMS		DIN 11851	
	Ra	Ri	Ra	Ri
CTAA-03	1"	1"	25	20
CTBB-07	1 1/2"	1"	40	25
CTCC-15	1 1/2"	1 1/2"	40	40
CTCC-22	1 1/2"	1 1/2"	40	40
CTCE-22	1 1/2"	1 1/2"	40	40
CTDD-40	2"	2"	50	50
CTDF-40	2"	2"	50	50
CTDF-55	2"	2"	50	50
CTDG-55	2"	2"	50	50

Changes reserved without notice

## ▶▶▶ Ordering a CT pump

The CT pumps are available in standard version as well as special versions to suit any requirements.

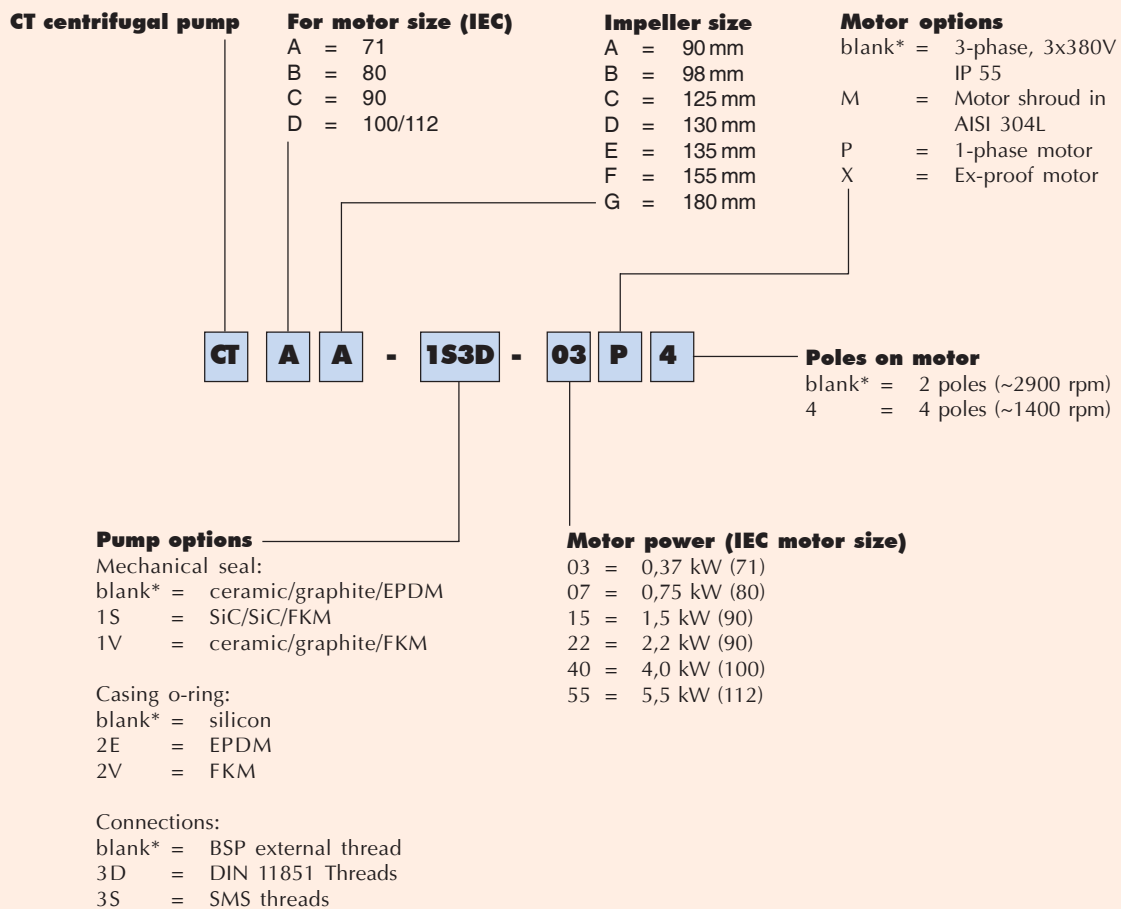
### The standard CT pumps

CTAA-03	CTDD-40
CTBB-07	CTDF-40
CTCC-15	CTDF-55
CTCC-22	CTDG-55
CTCE-22	

These standard models have the following configuration:

Mechanical seal:	ceramic/graphite/EPDM
Casing o-ring:	silicon
Motor:	IP55, 3-phase 220/380V, 50 Hz, 2900 rpm, IEC frame B3/B14
Connections:	External BSP threads

### Special versions and complete pumpcode



\* = Standard execution

Changes reserved without notice